

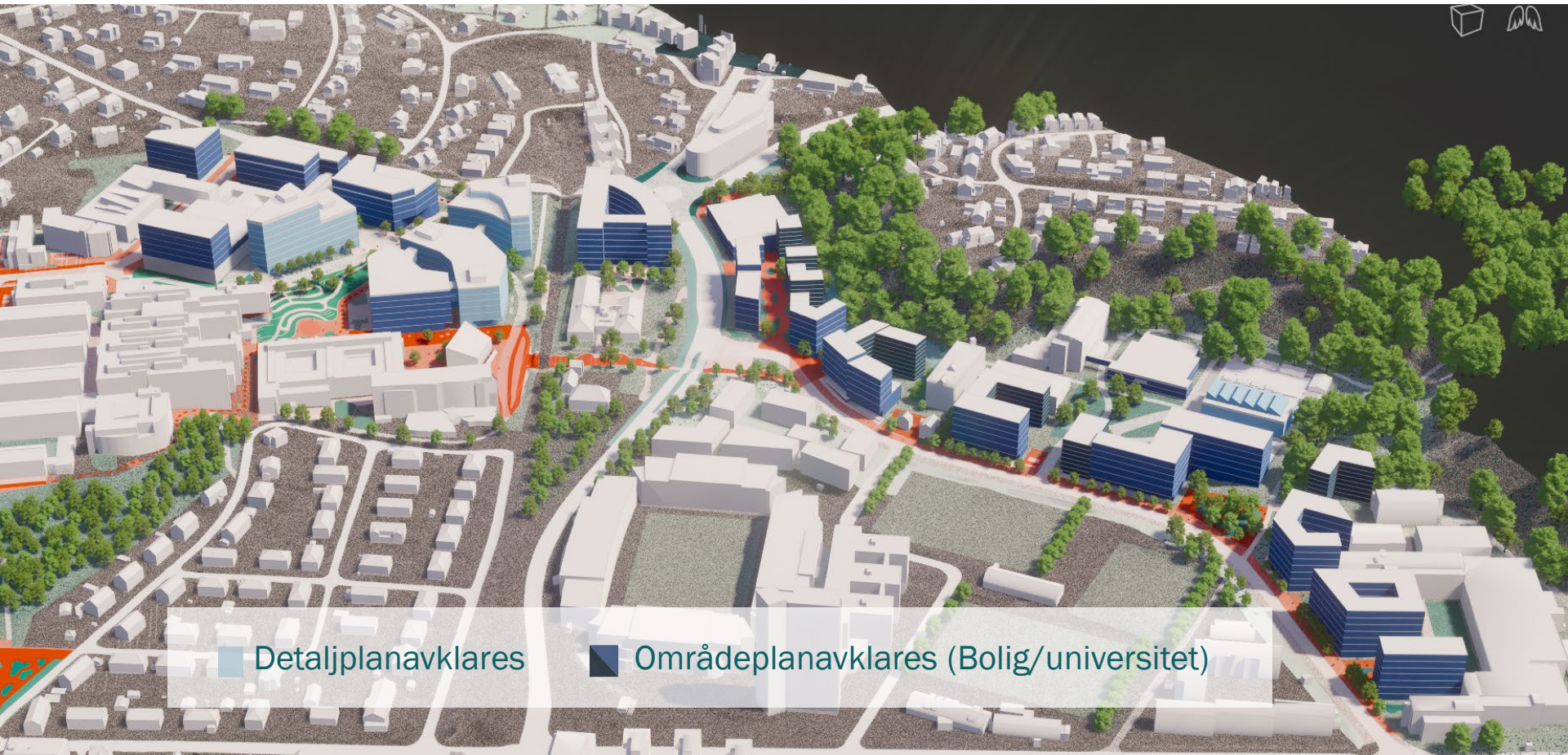



# NTNU Campussamling – Perspektiver - virkning Områdeplan D04 og 5

11.05.2022



# Samlet modell - D04 og 5

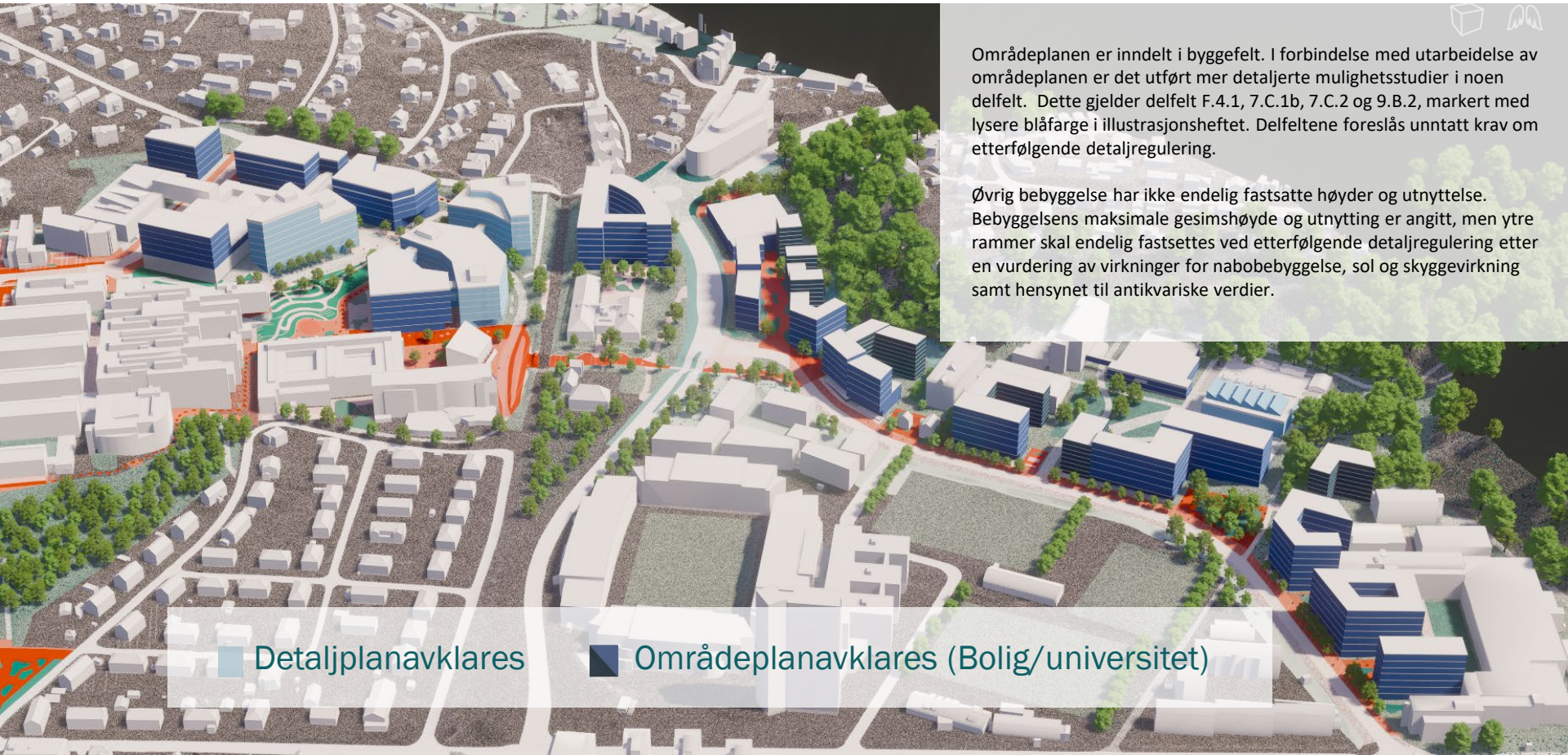


 Detaljplanavklares

 Områdeplanavklares (Bolig/universitet)




# Samlet modell - D04 og 5



Områdeplanen er inndelt i byggefelt. I forbindelse med utarbeidelse av områdeplanen er det utført mer detaljerte mulighetsstudier i noen delfelt. Dette gjelder delfelt F.4.1, 7.C.1b, 7.C.2 og 9.B.2, markert med lysere blåfarge i illustrasjonsheftet. Delfeltene foreslås unntatt krav om etterfølgende detaljregulering.

Øvrig bebyggelse har ikke endelig fastsatte høyder og utnyttelse. Bebyggelsens maksimale gesimshøyde og utnyttning er angitt, men ytre rammer skal endelig fastsettes ved etterfølgende detaljregulering etter en vurdering av virkninger for nabobebyggelse, sol og skyggevirkning samt hensynet til antikvariske verdier.

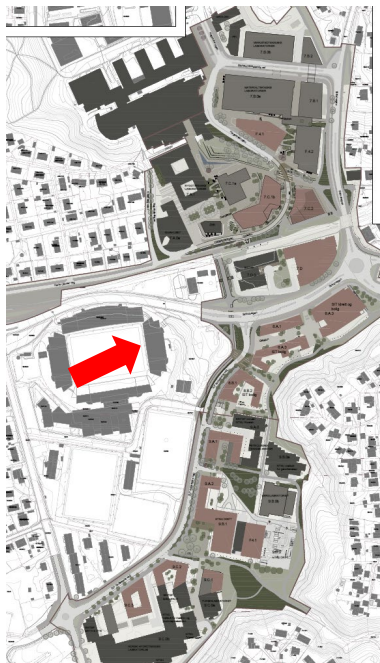
 Detaljplanavklares

 Områdeplanavklares (Bolig/universitet)



# D04&5

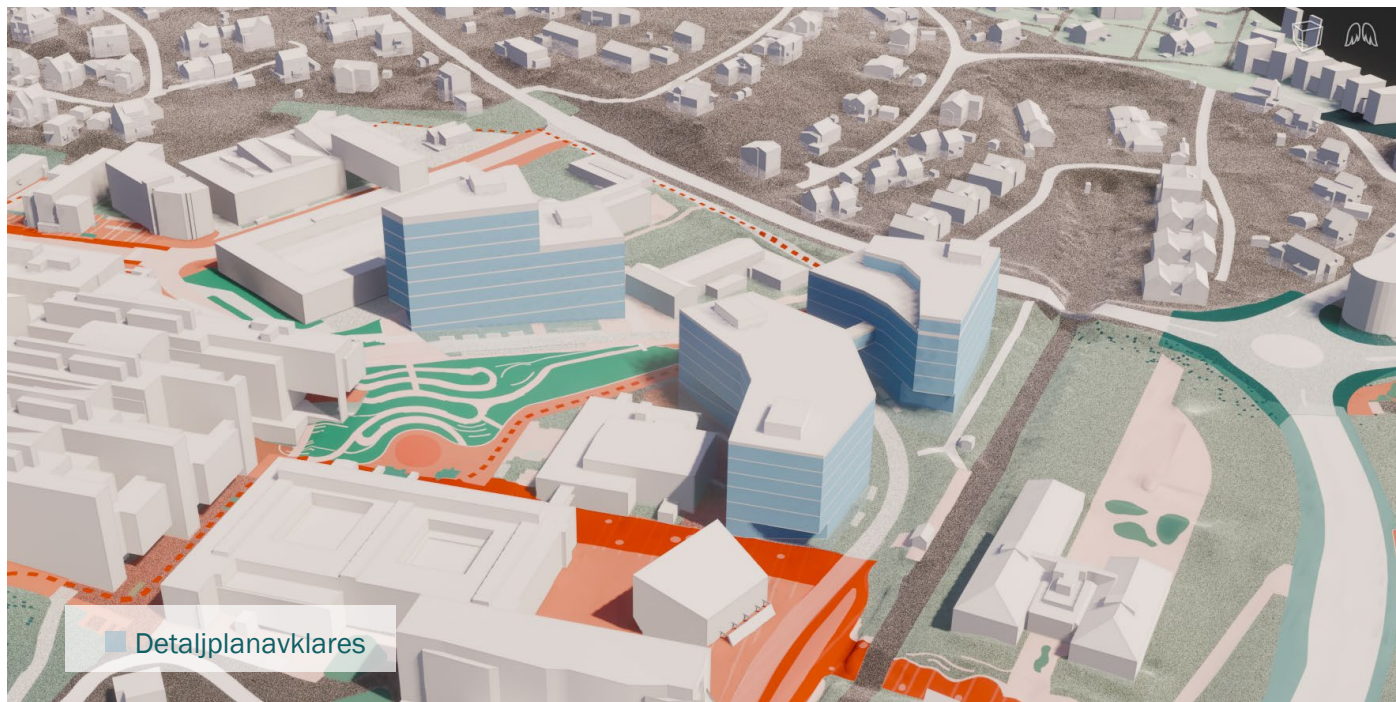
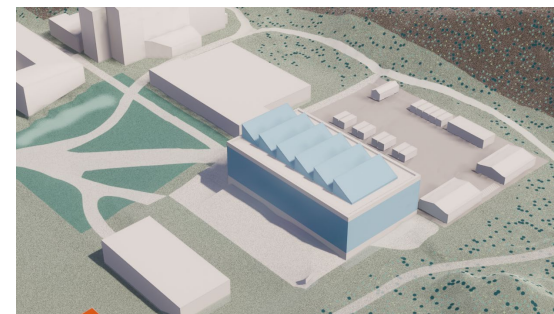
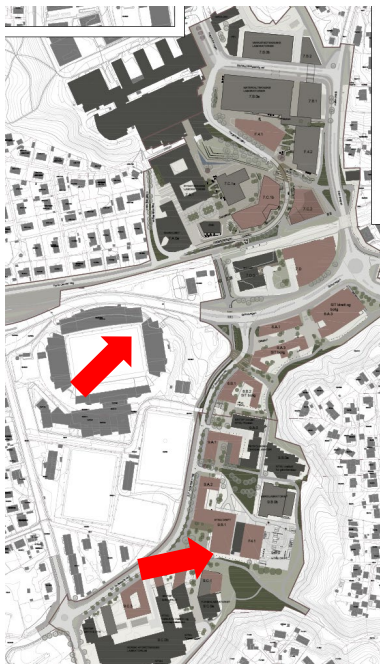
- DO 4- fugleperspektiv





# D04&5

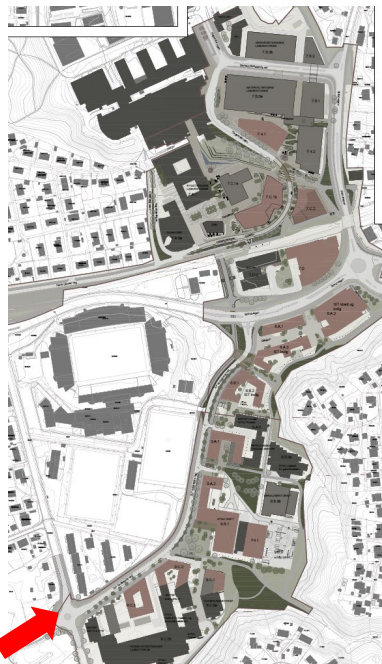
- Detaljplanavklarte tomter





# D04&5

- D0 5- fugleperspektiv





# 3d-visualiseringer

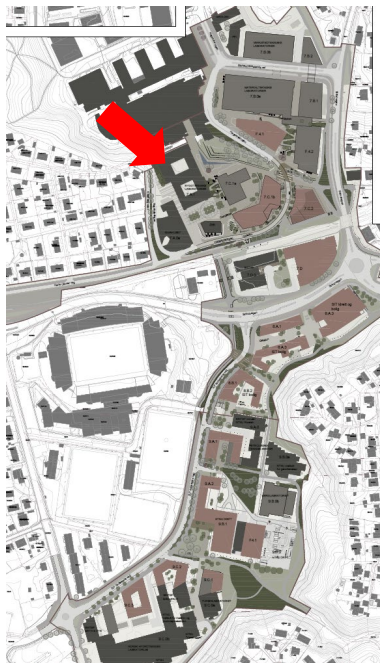
- Lerkendal syd for Strindvegen - fugleperspektiv





# D04&5

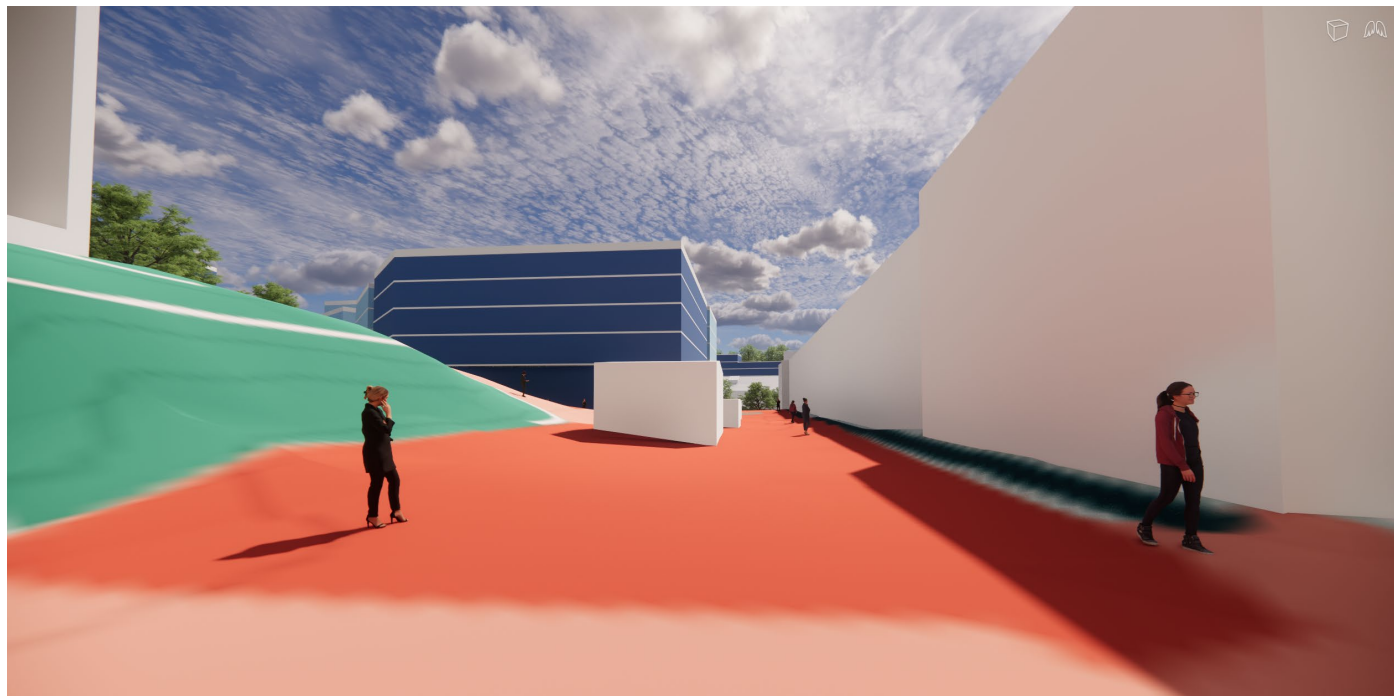
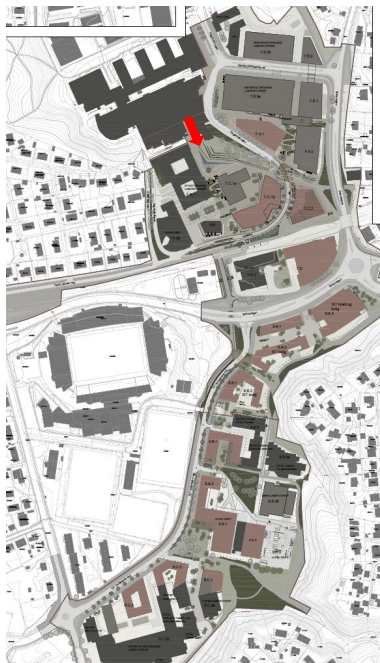
- DO 4 - fugleperspektiv





# D04&5

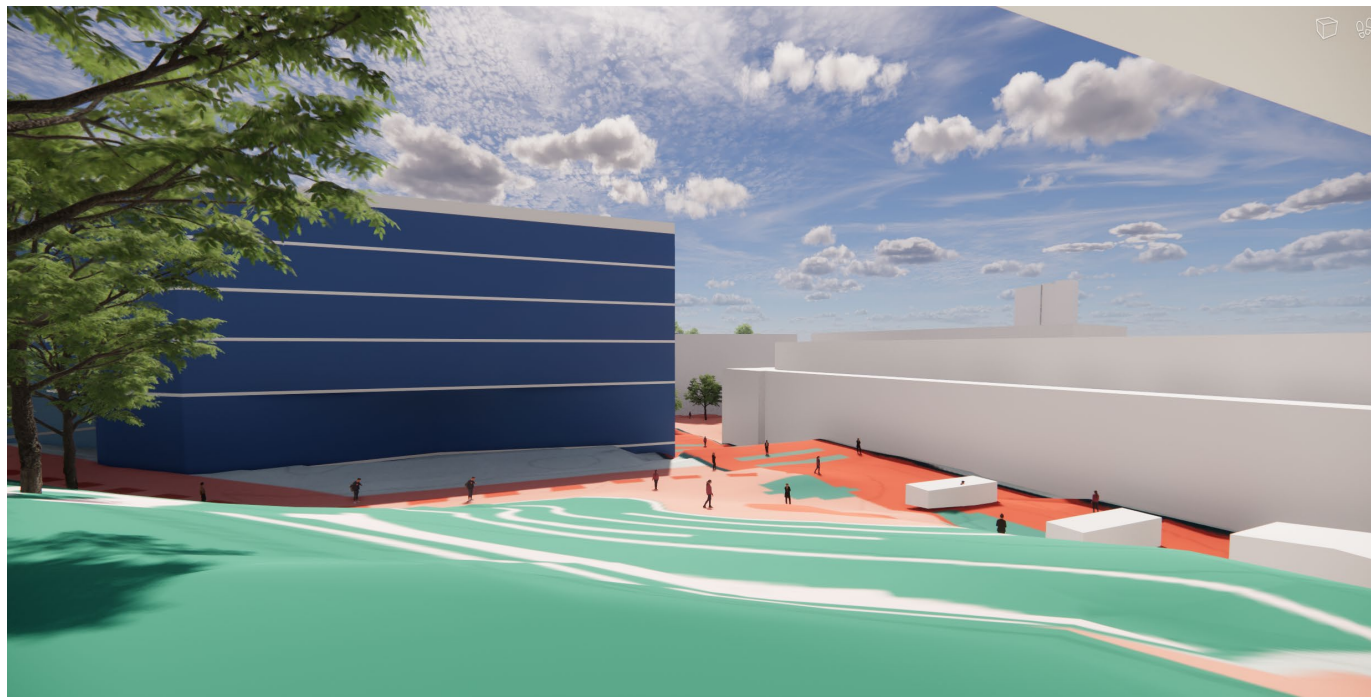
- Sør for Realfagbygget, perspektiv mot sør





# D04&5

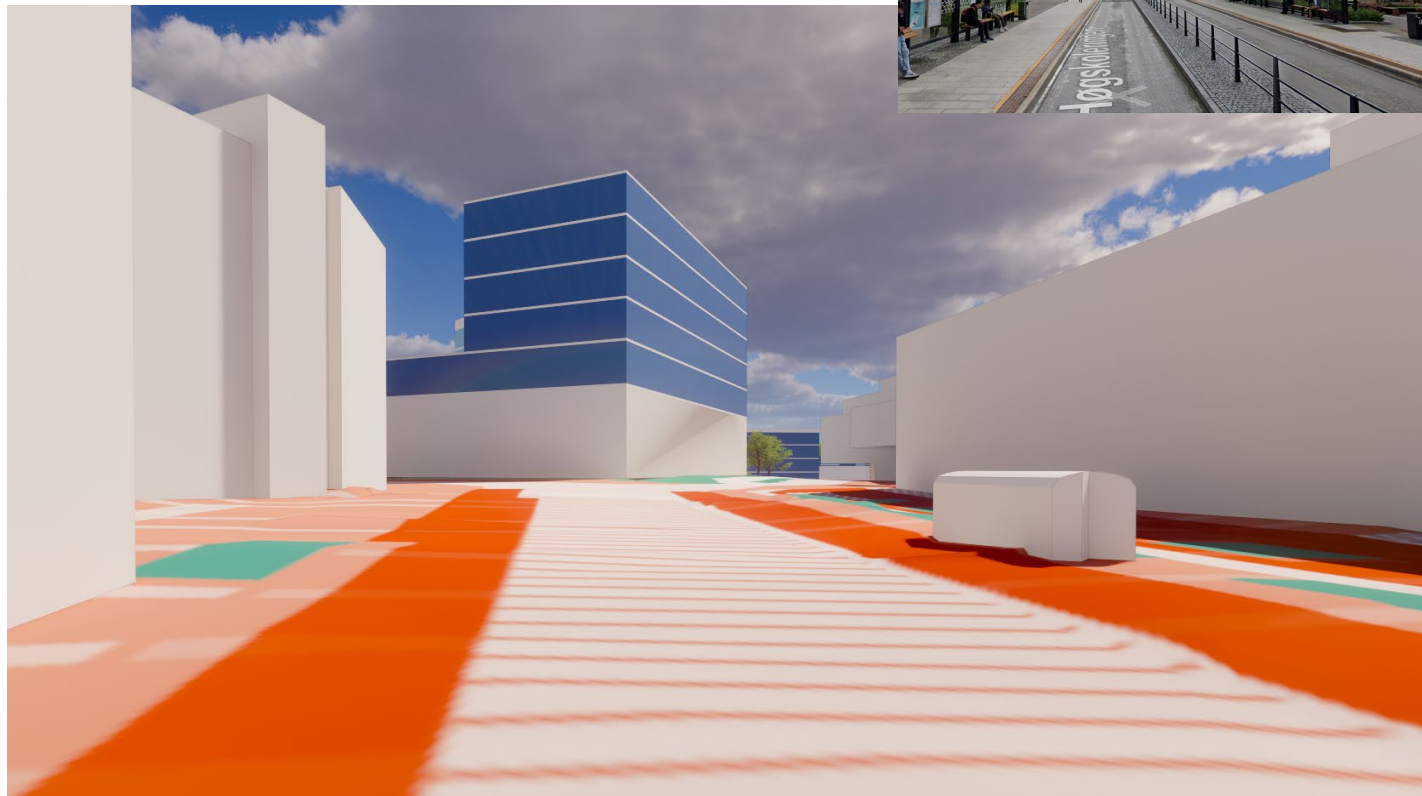
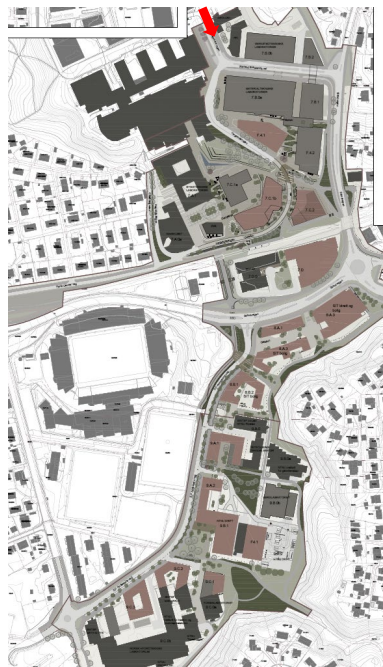
- Realfagbygget, perspektiv mot sør





# D04&5

- Påbygg - Materialteknisk lab, perspektiv mot sør





# D04&5

- Strindvegen





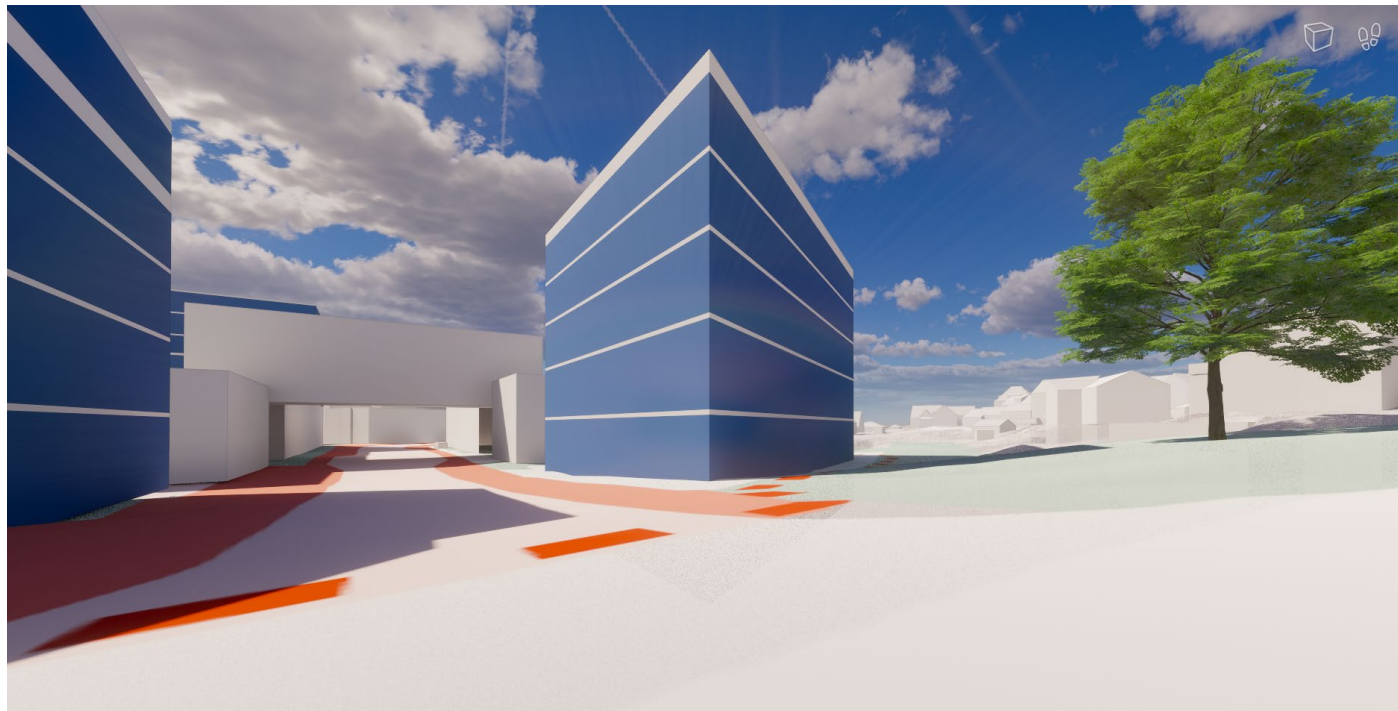
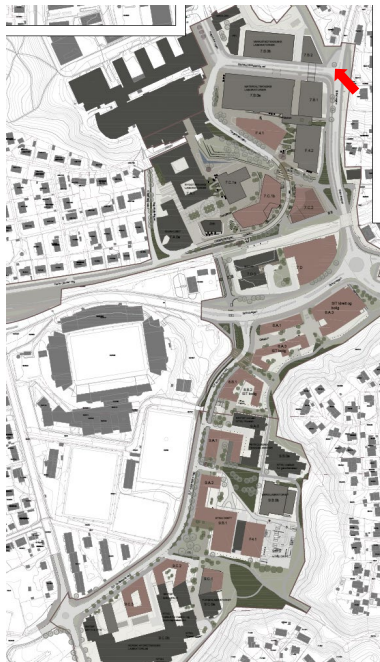
# D04&5

- Strindvegen



# D04&5

- Perleporten





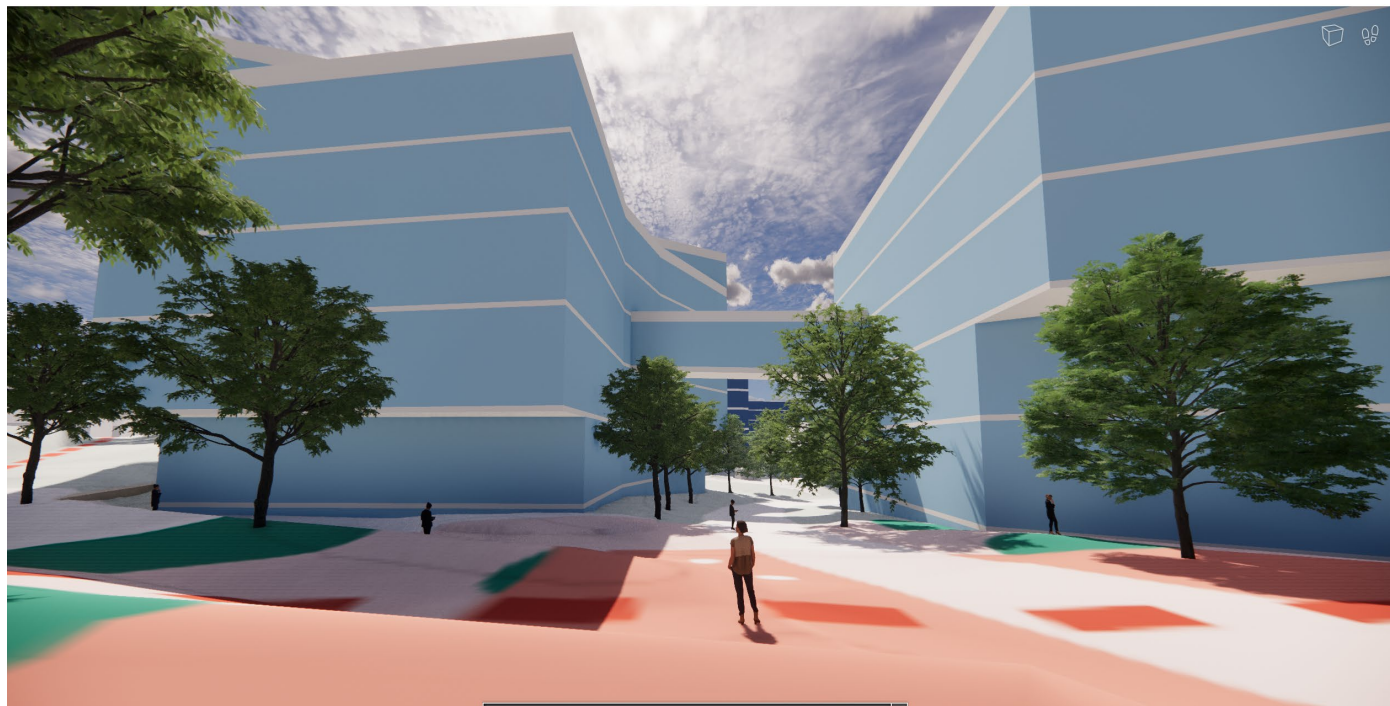
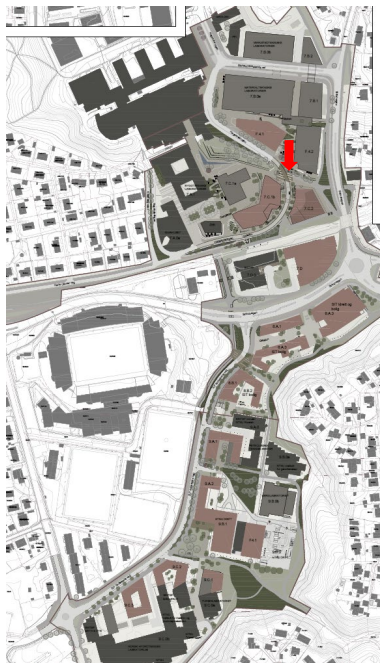
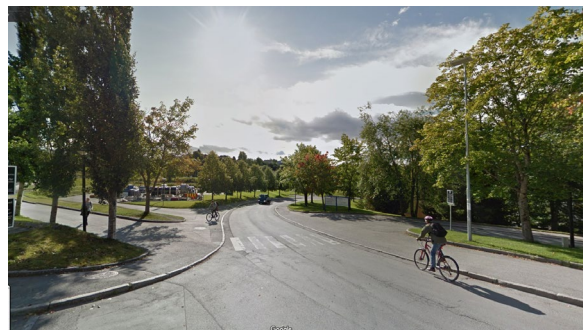
# D04&5

- Strindvegen



# D04&5

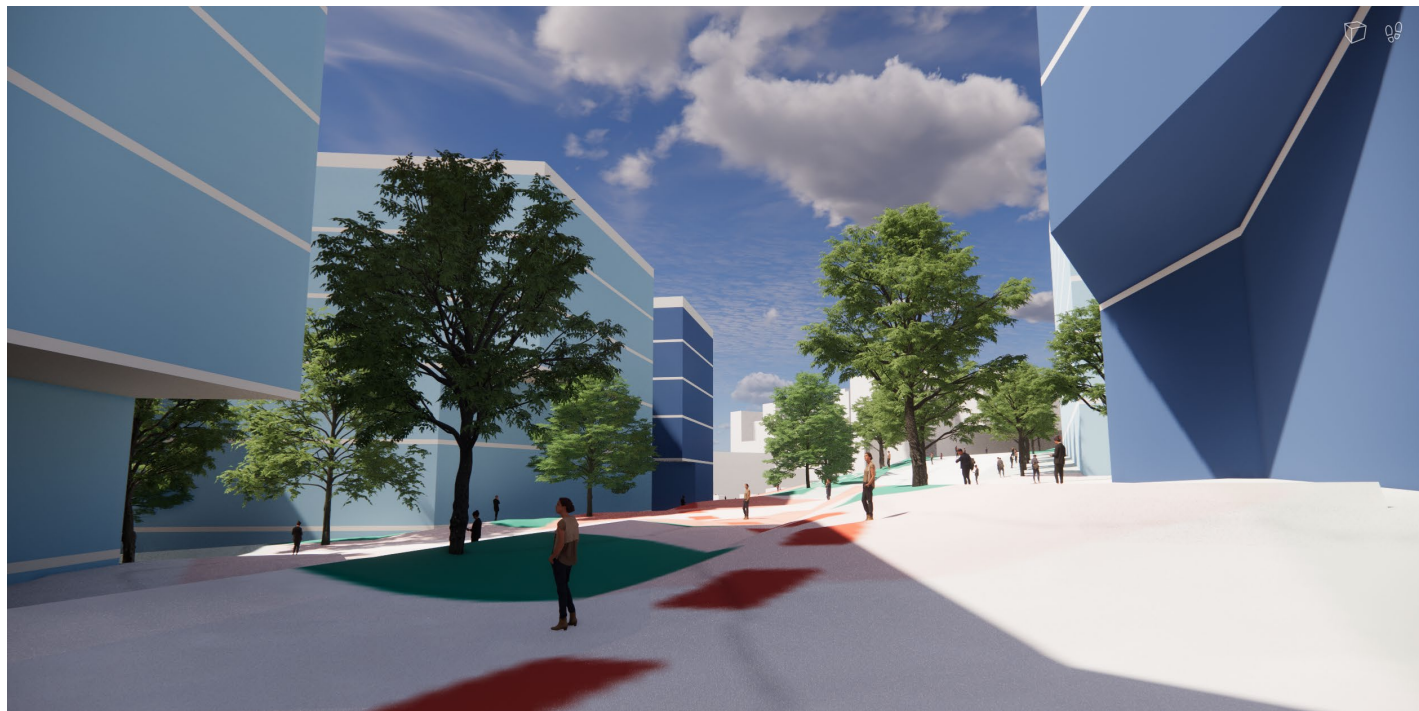
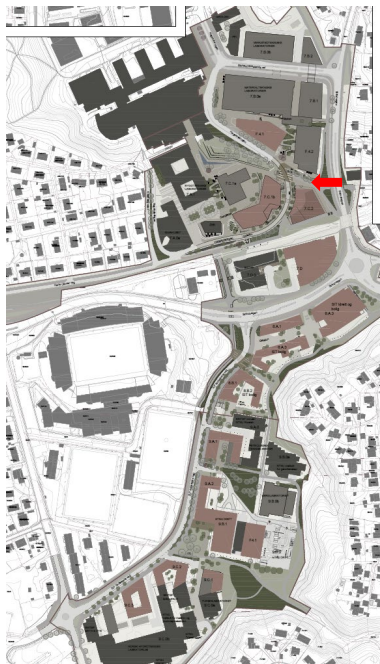
- Høgskoleringen





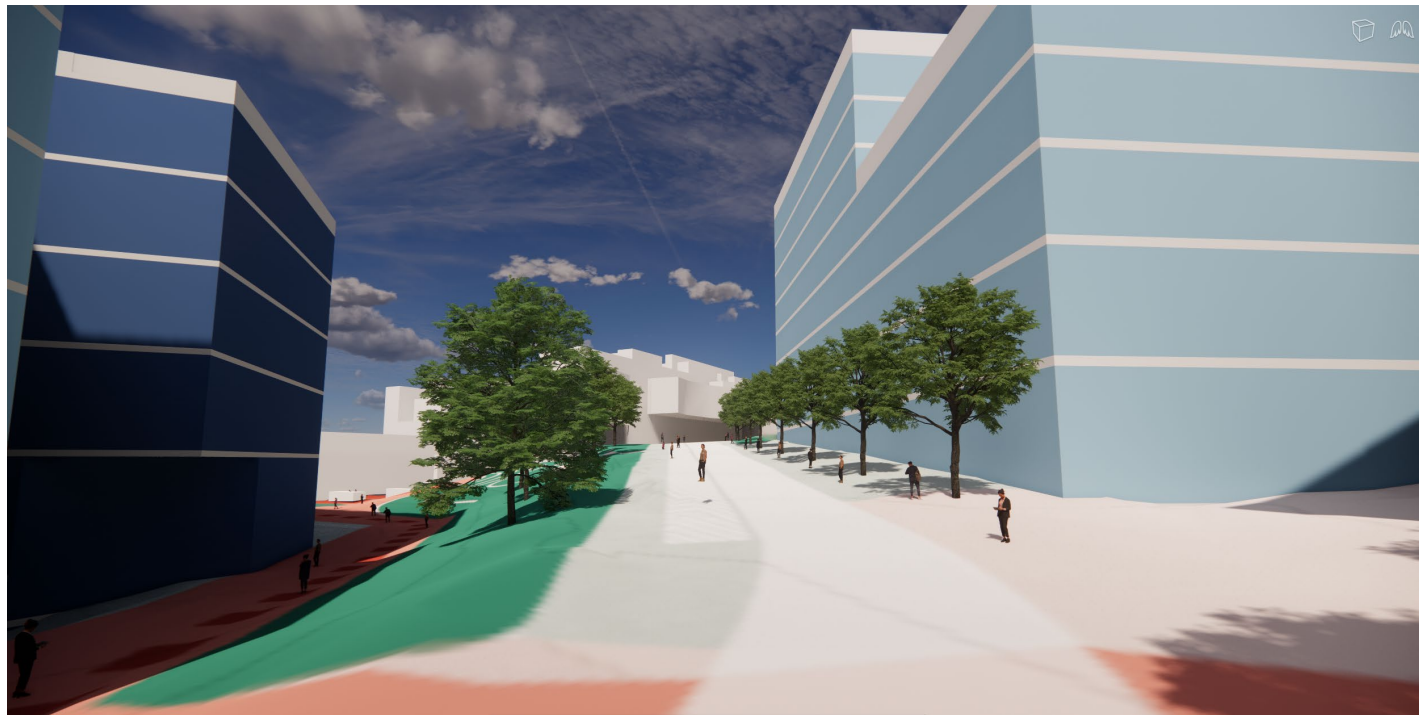
# D04&5

- Høgskoleringen



# D04&5

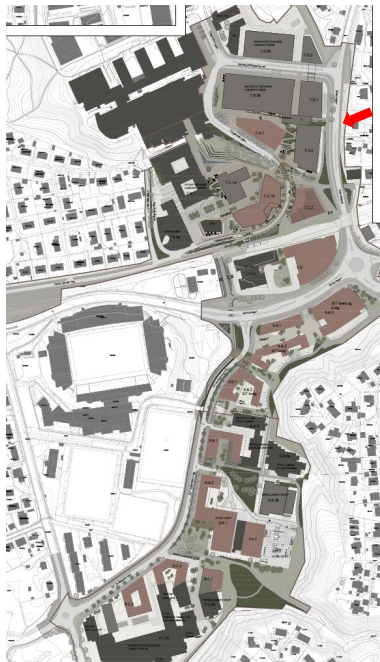
- Høgskoleringen





# D04&5

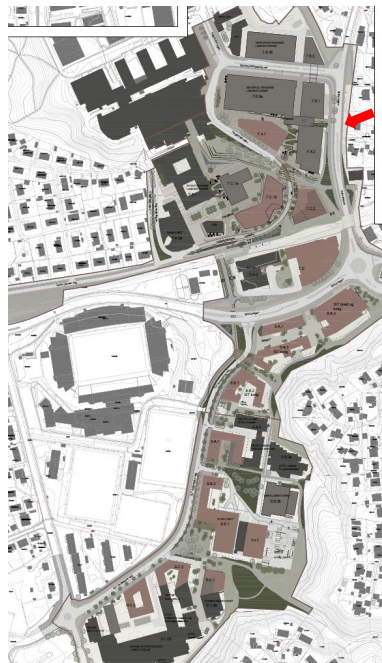
- Strindvegen sett mot vest





# D04&5

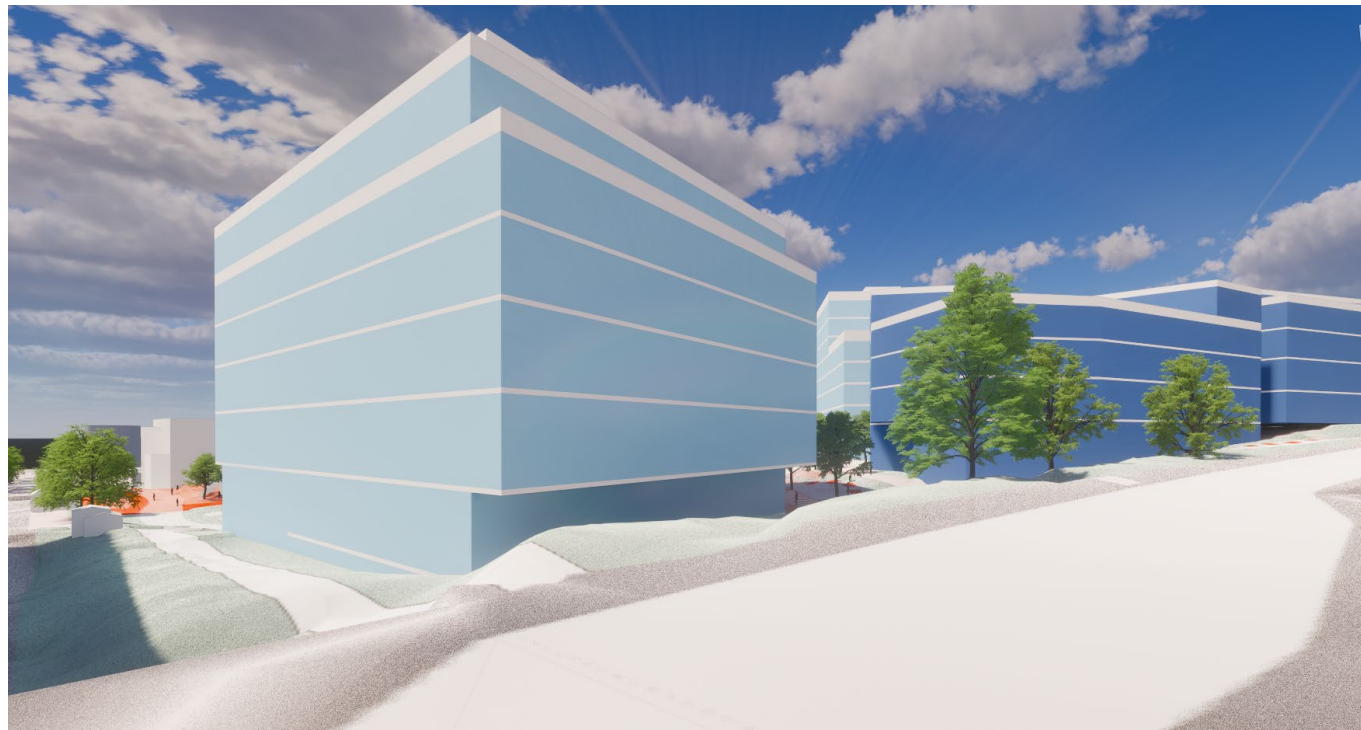
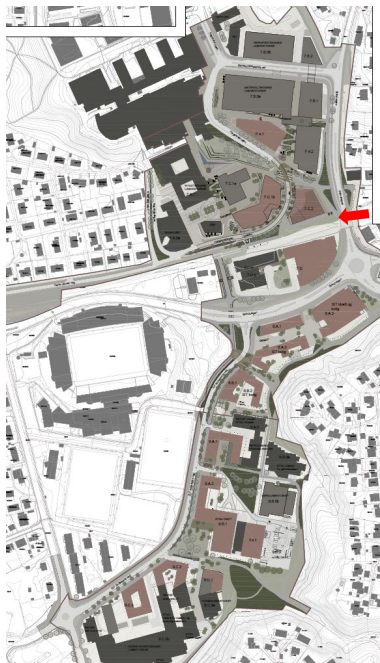
- Strindvegen sett mot vest
- Bare detaljplanavklarte tomter





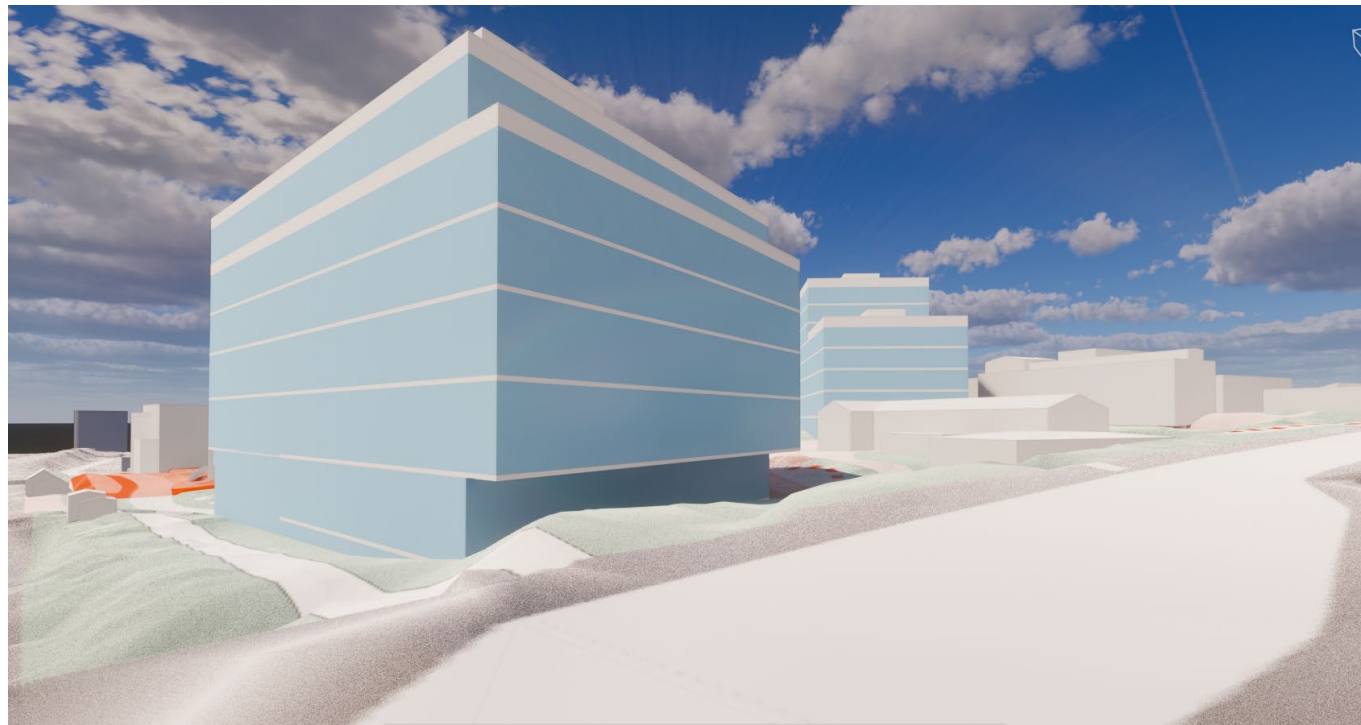
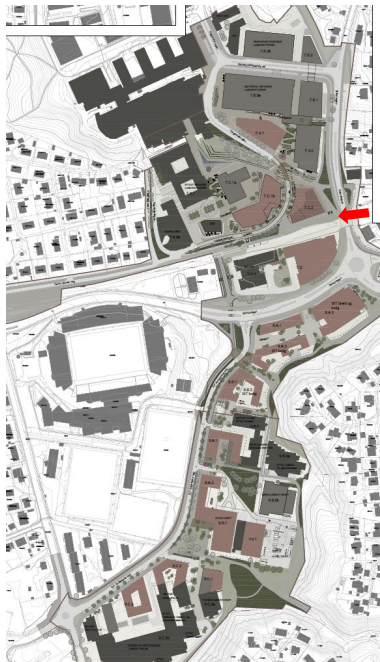
# D04&5

- Strindvegen sett mot vest



# D04&5

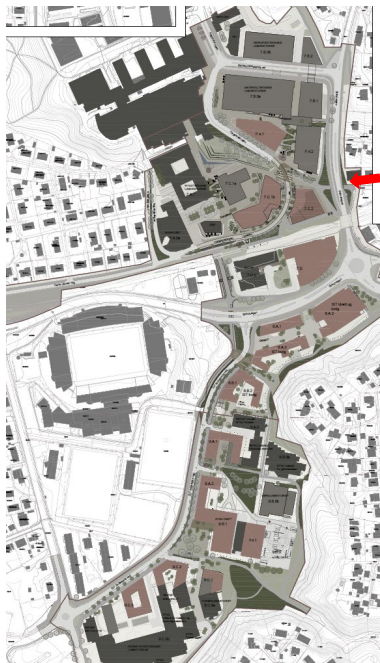
- Strindvegen sett mot vest
- Bare detaljvklarte tomter





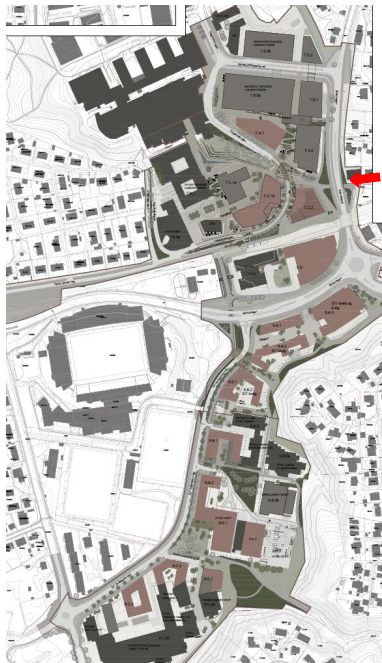
# D04&5

- Strindvegen sett mot vest



## D04&5

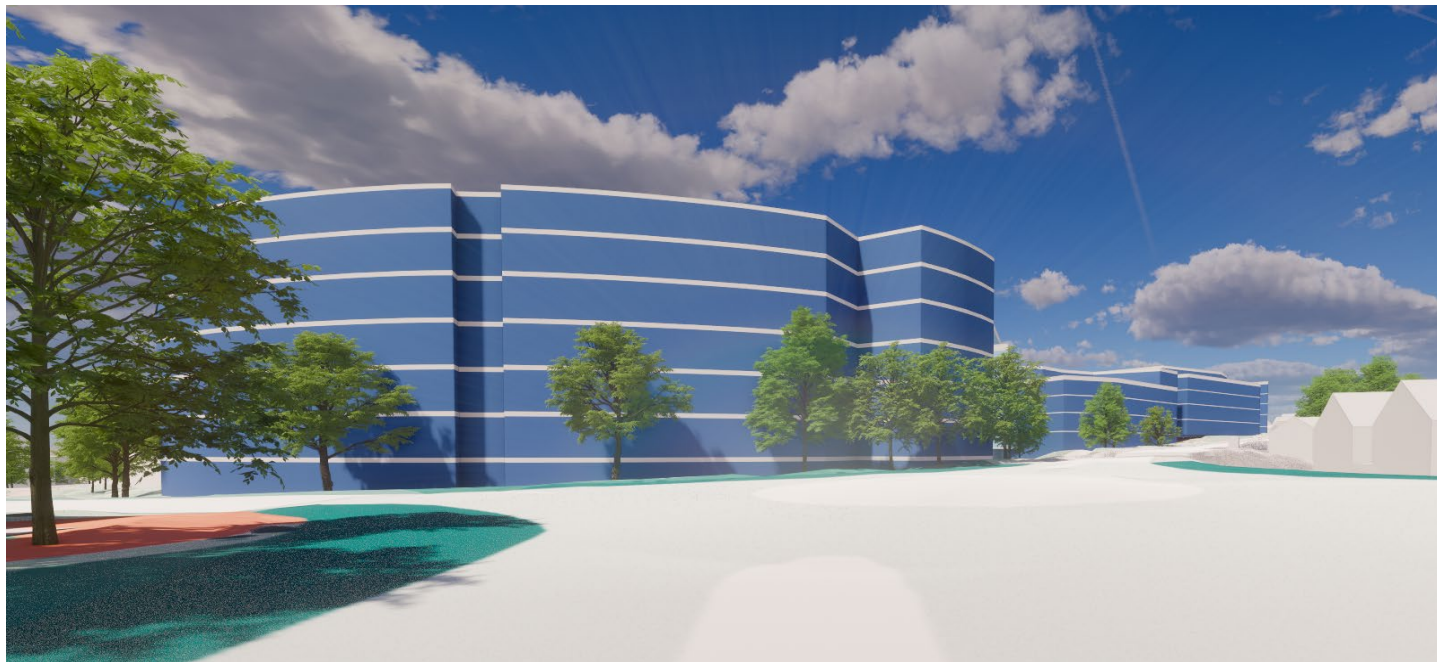
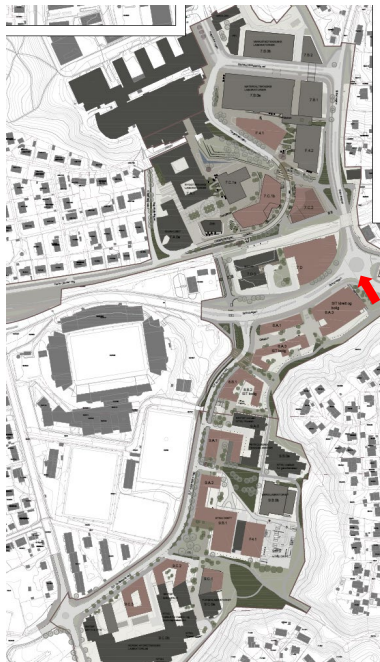
- Strindvegen sett mot vest
- Bare detaljplanavklarte tomter





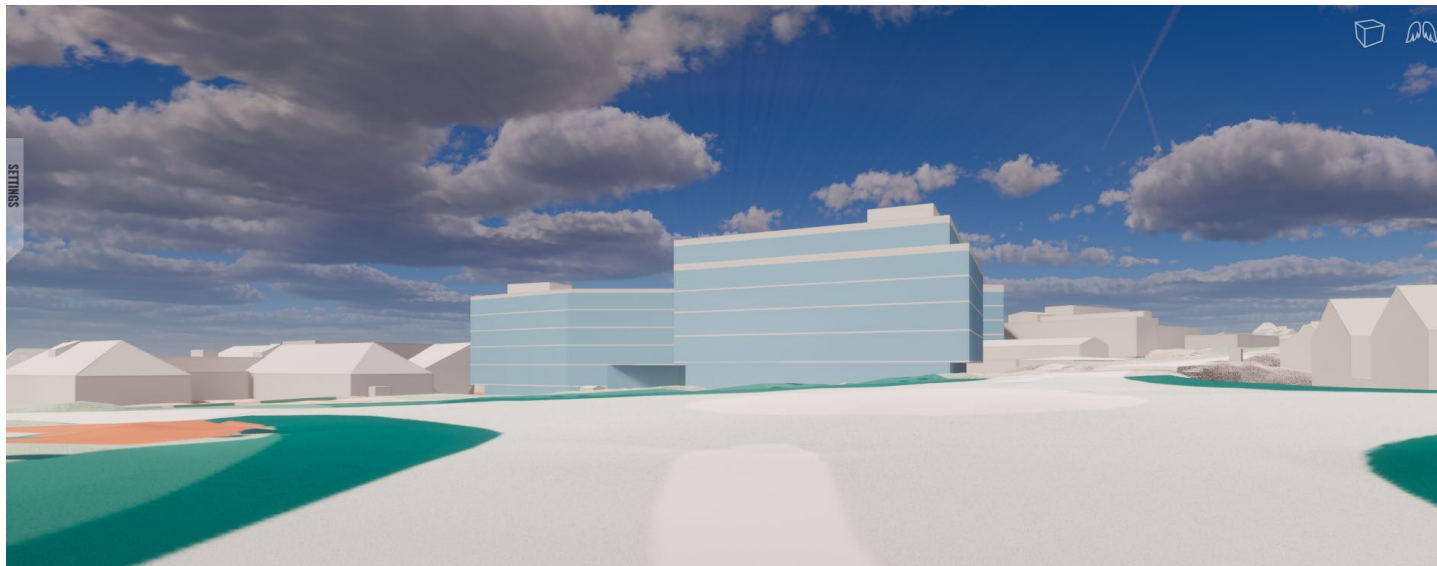
# D04&5

- Lerkendalrundkjøringen sett mot nord



# D04&5

- Lerkendalrundkjøringen sett mot nord
- Bare detaljplanavklarte tomter







# D04&5

- Lerkendalrundkjøringen sett mot nord

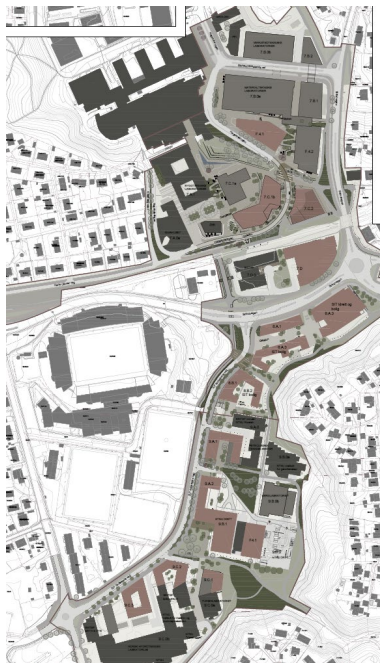






# D04&5

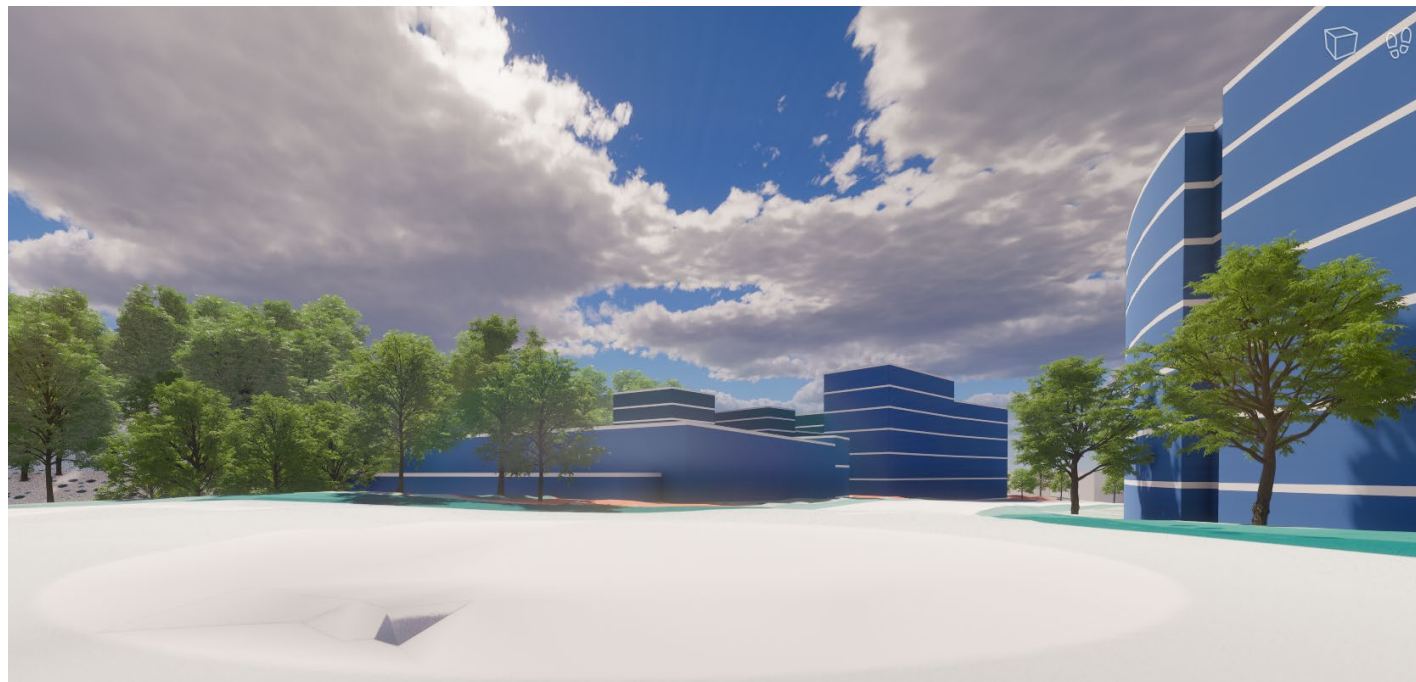
- Lerkendalrundkjøringen sett mot nord
- Bare detaljplanavklarte tomter





# D04&5

- Lerkendalrundkjøringen sett mot sør





# D04&5

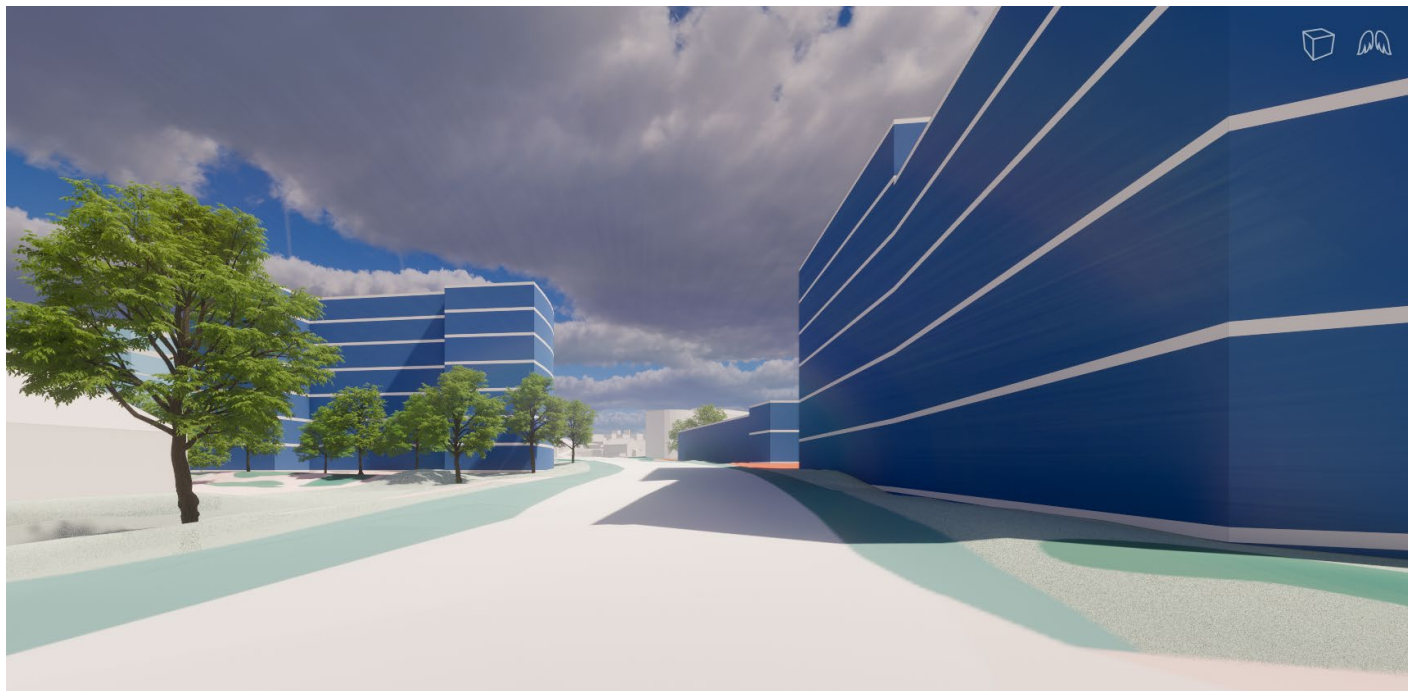
- Lerkendalrundkjøringen sett mot sør





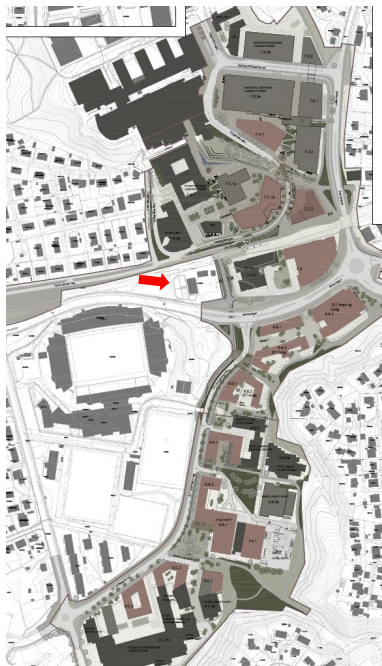
# D04&5

- Strindvegen gaterom



# D04&5

- Strindvegen gaterom





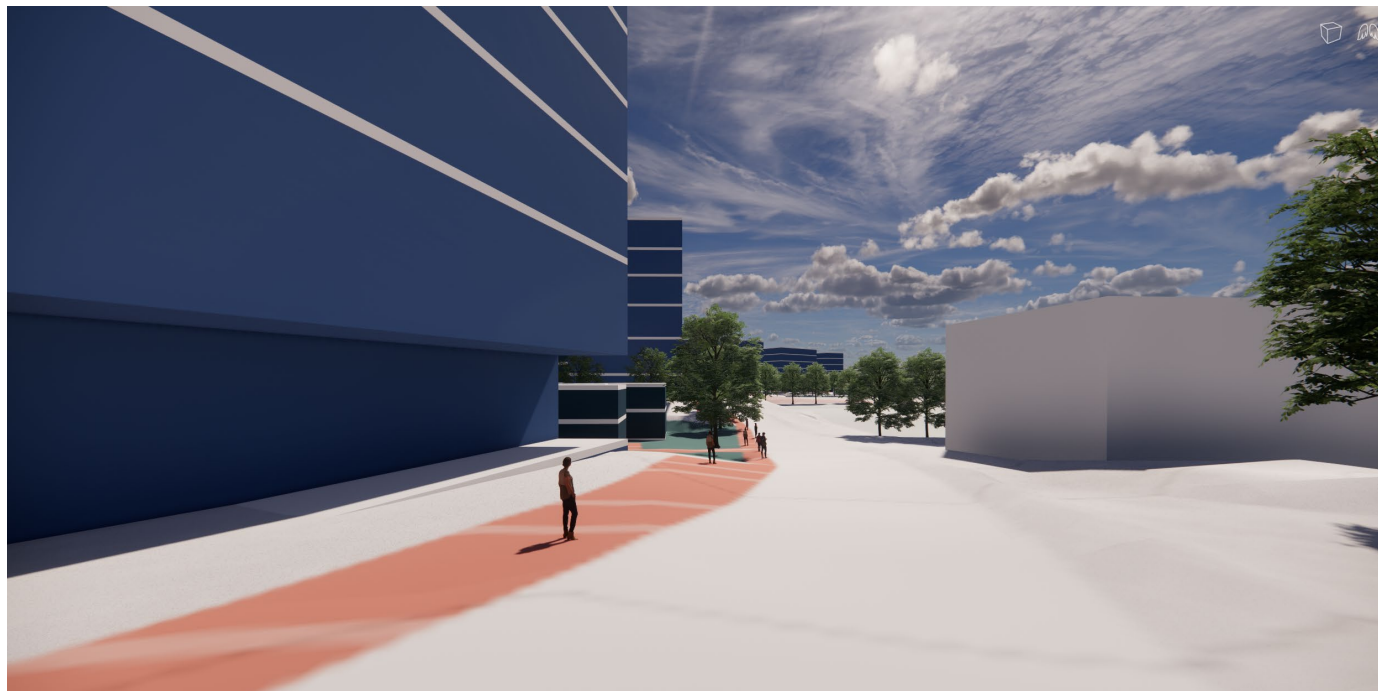
# D04&5

- S.P Andersens veg mot sør



# D04&5

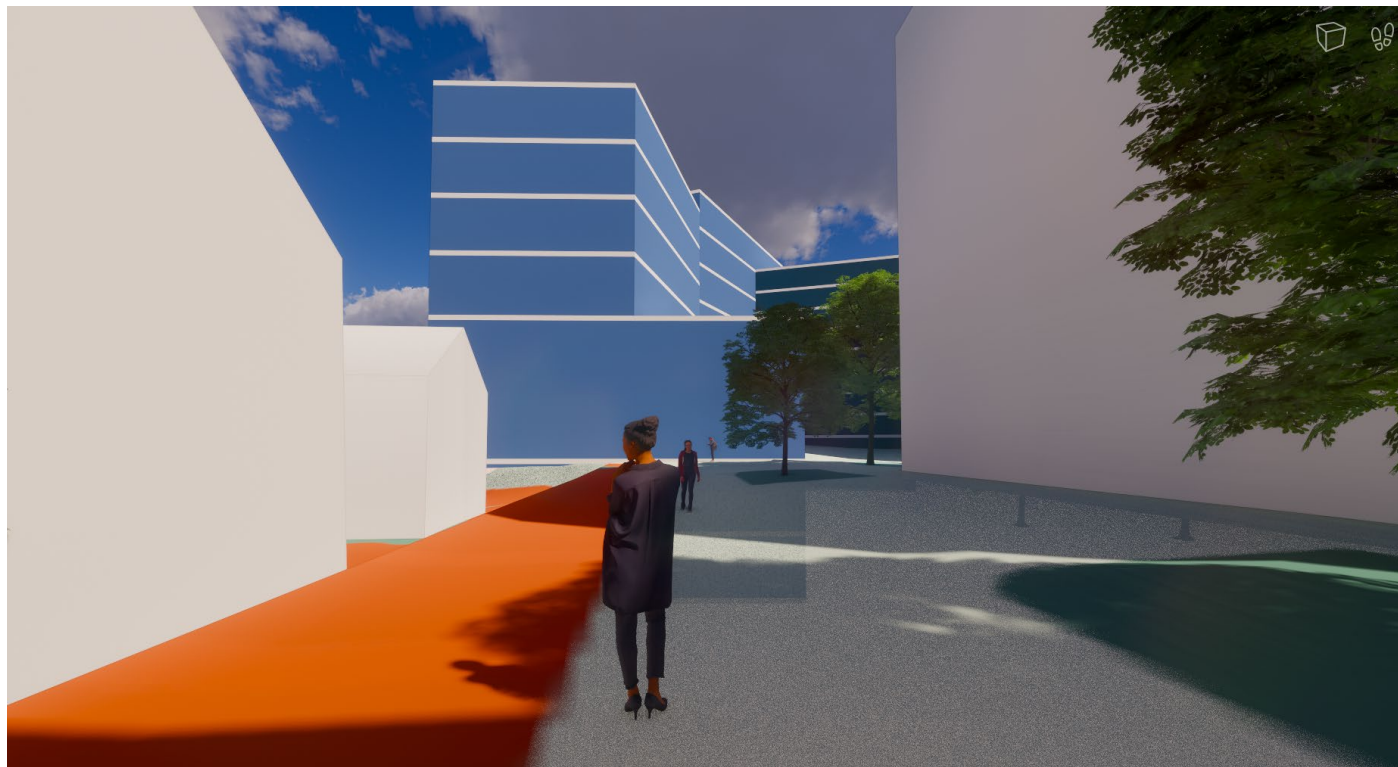
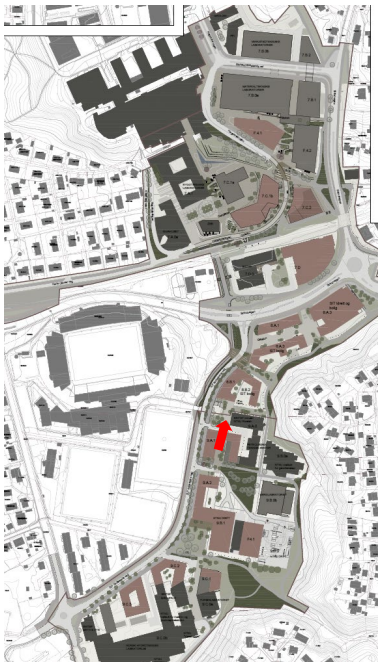
- Campus Aksen / S.P.Andersens veg





# D04&5

- Eksisterende bygg og gatetun
- Lund gård flyttet



# D04&5

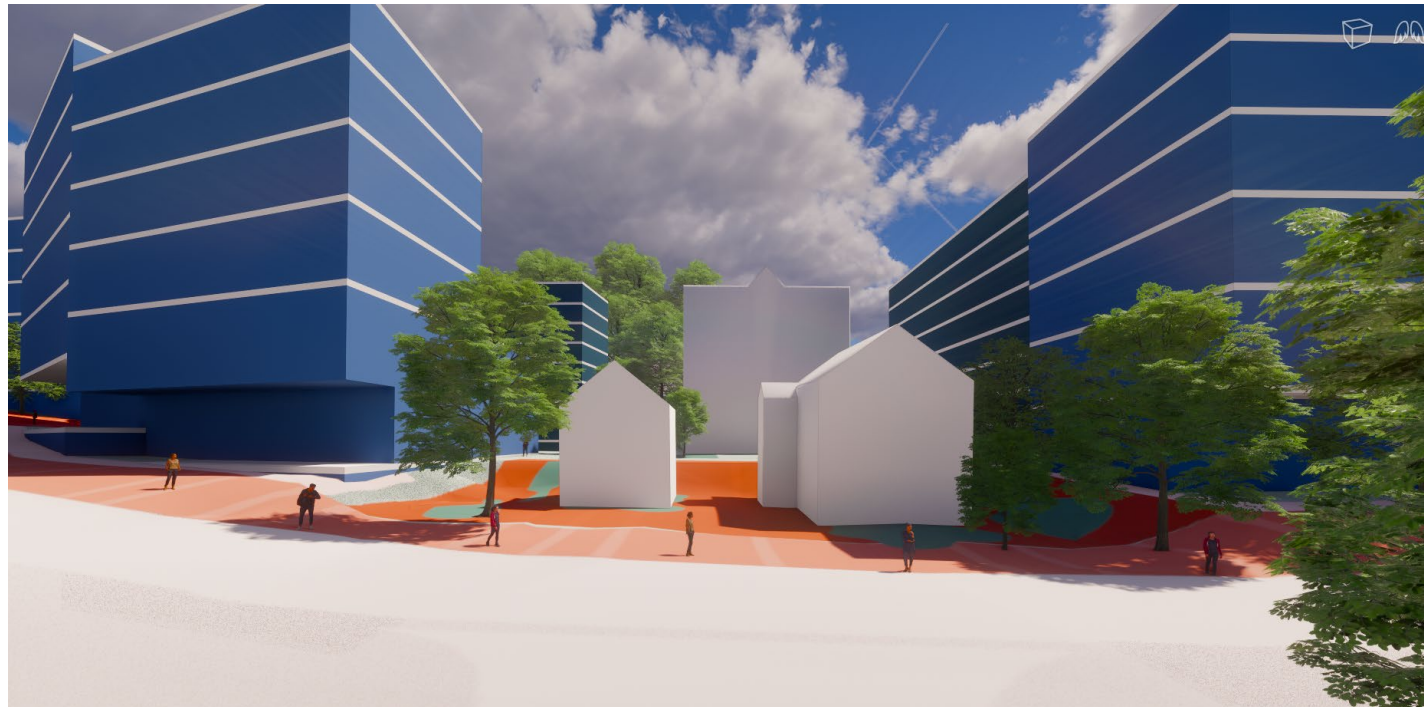
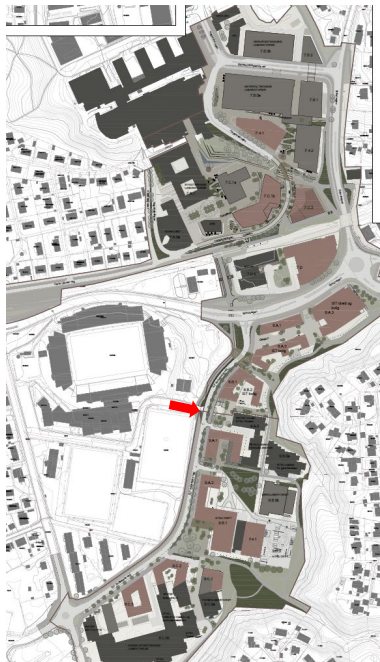
- Lund gård flyttet





# D04&5

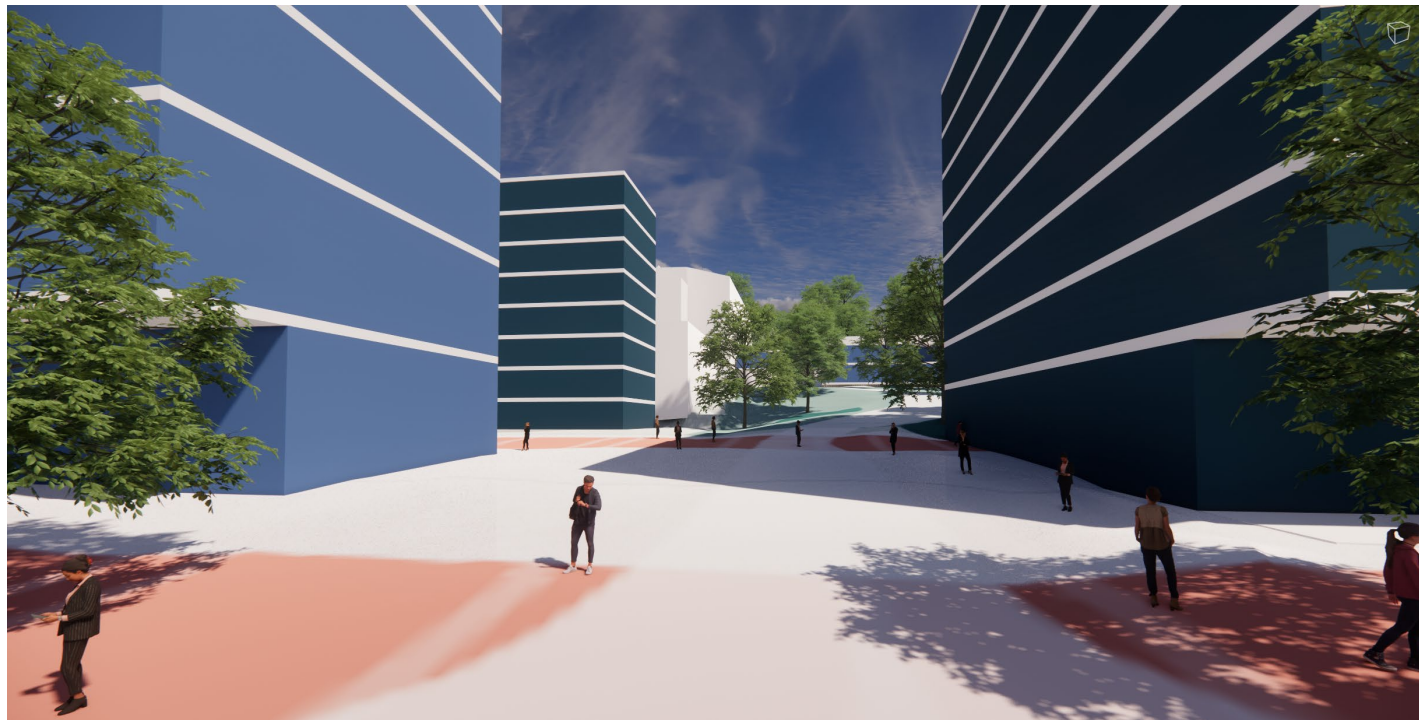
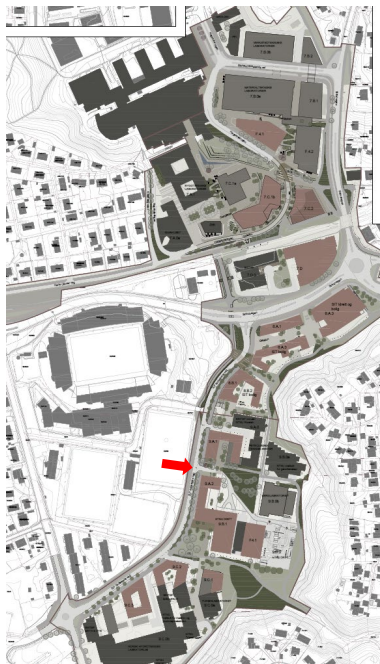
- Lund gård flyttet





# D04&5

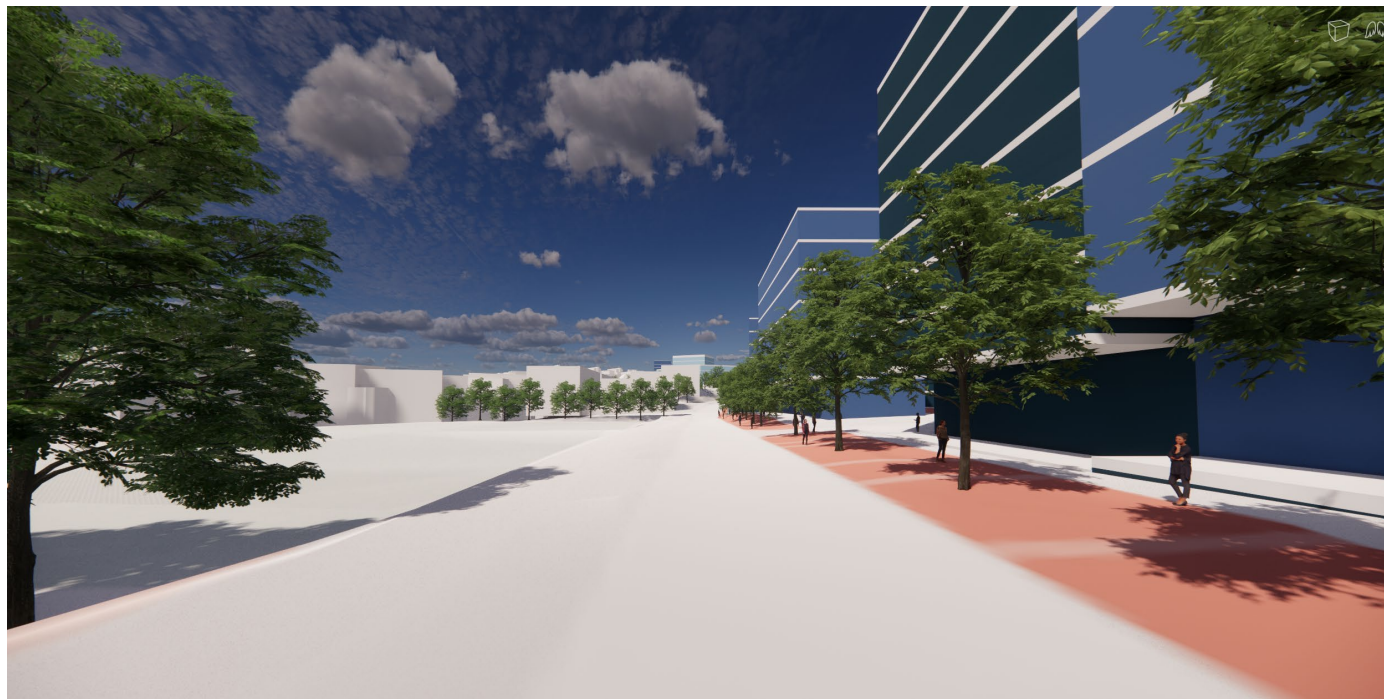
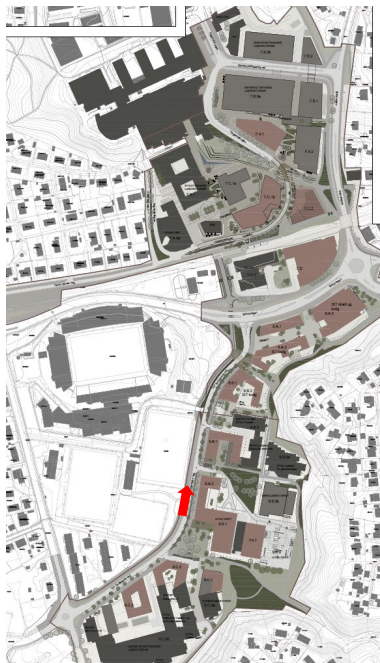
- Ankomstplass D0 5





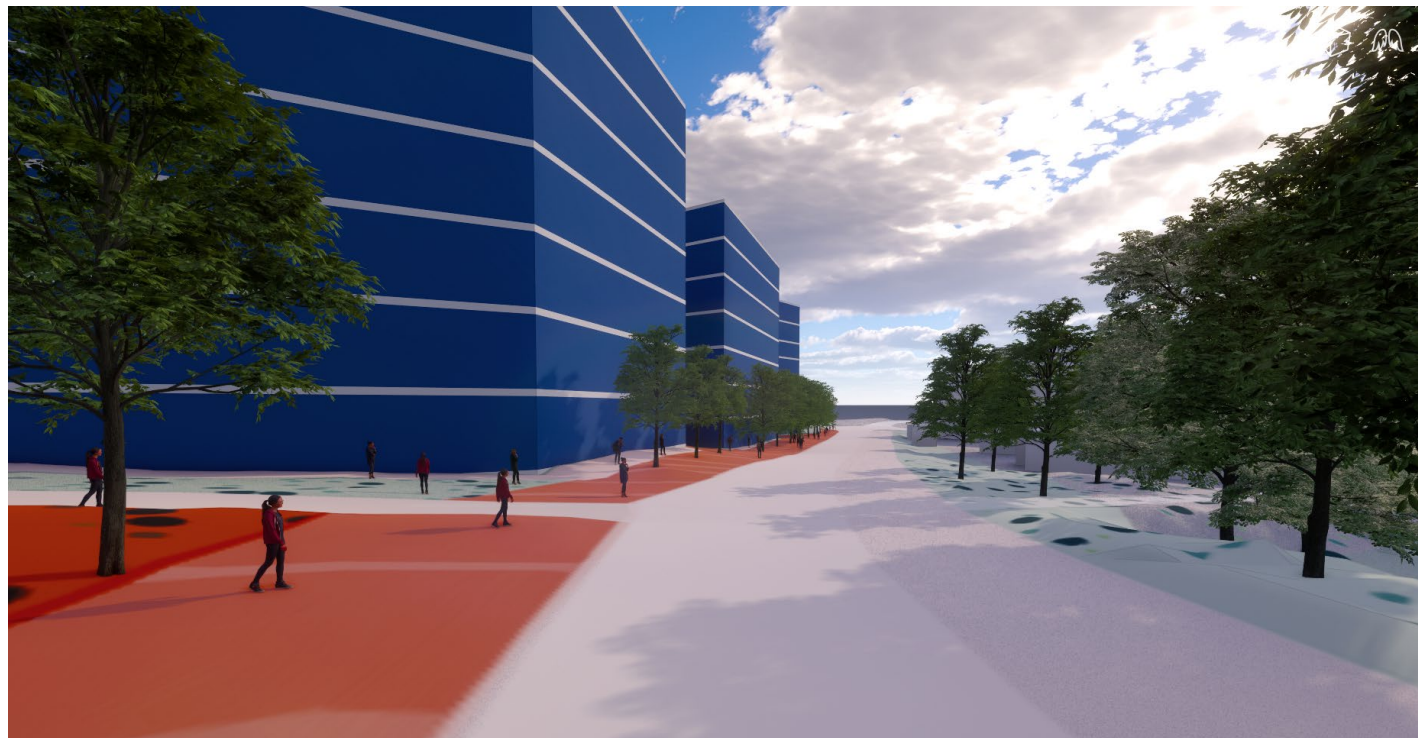
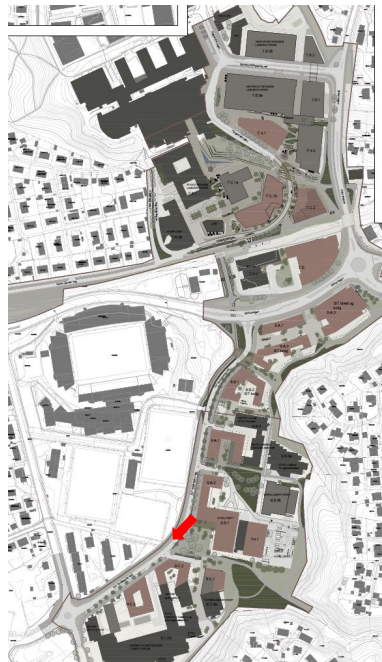
# D04&5

- S.P.Andersens veg



# D04&5

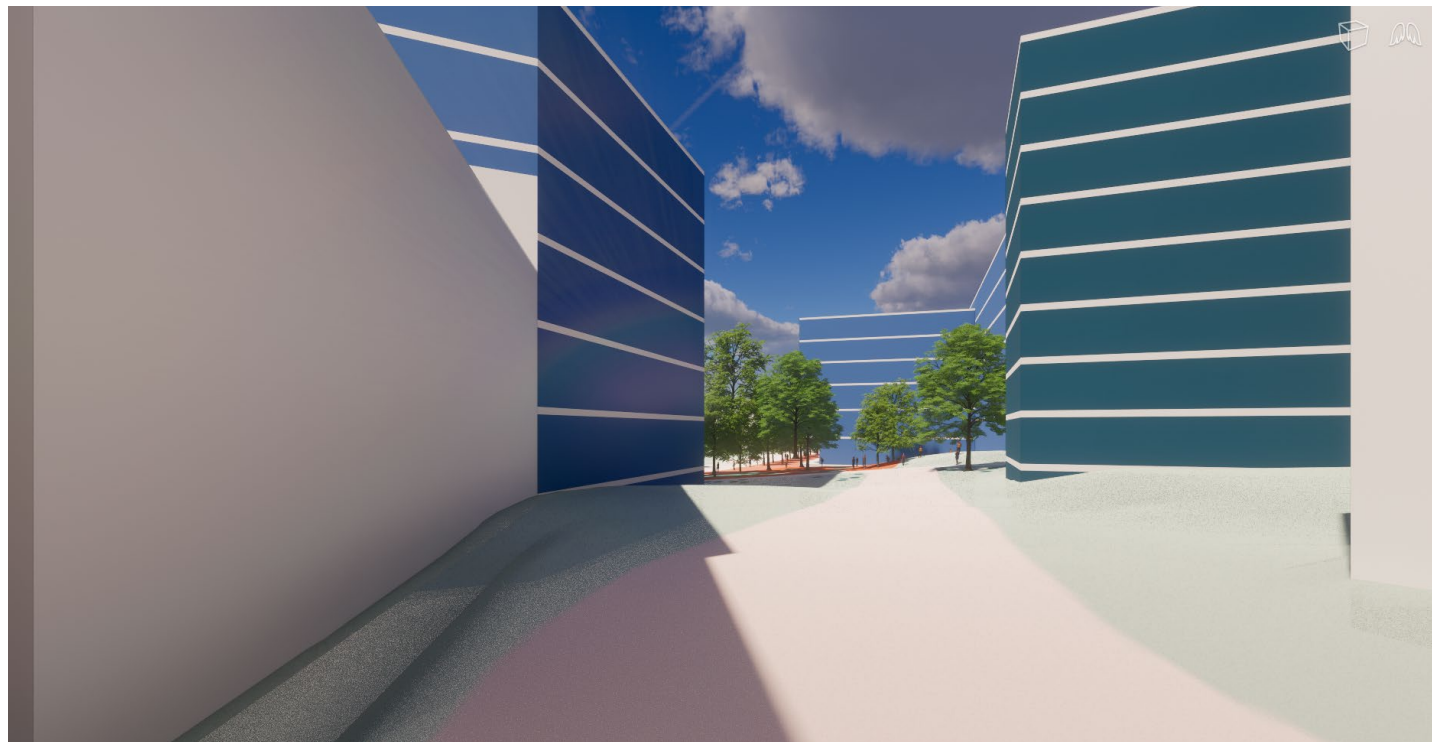
- Hydroteknisk / S.P Andersens Veg





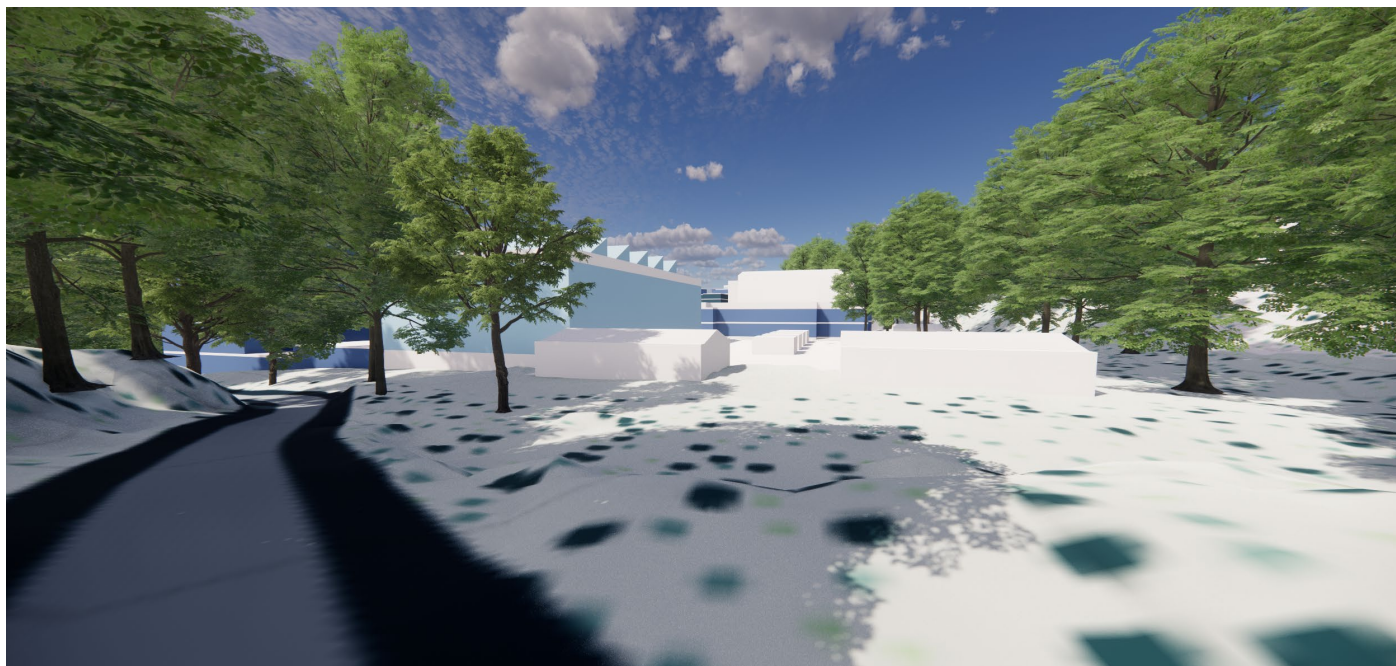
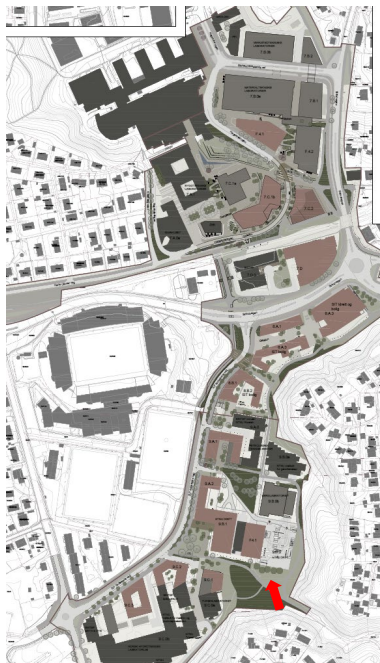
# D04&5

- Hydroteknisk



# D04&5

- Logistikkterminalen





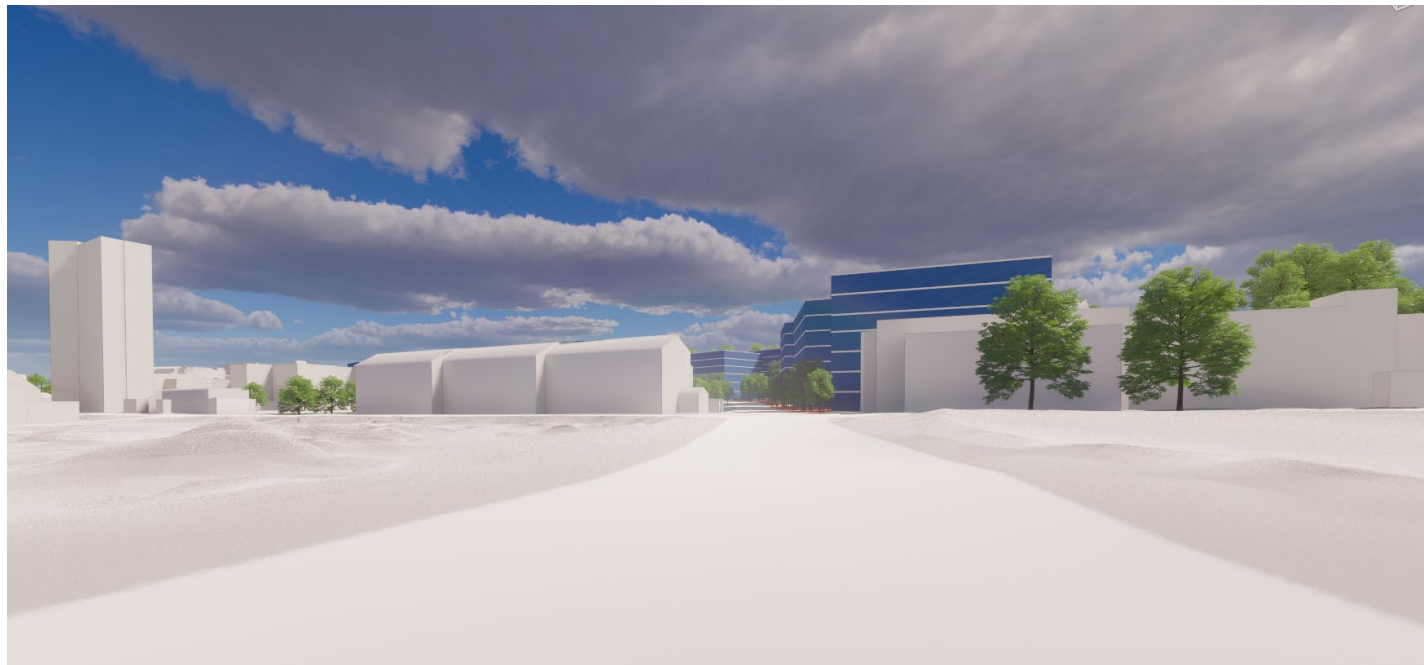
# D04&5

- Hydroteknisk / Klæbuveien



# D04&5

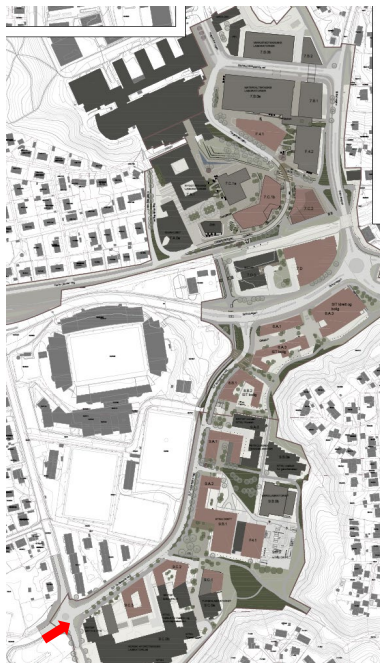
- Hydroteknisk / Sorgenfrivegen





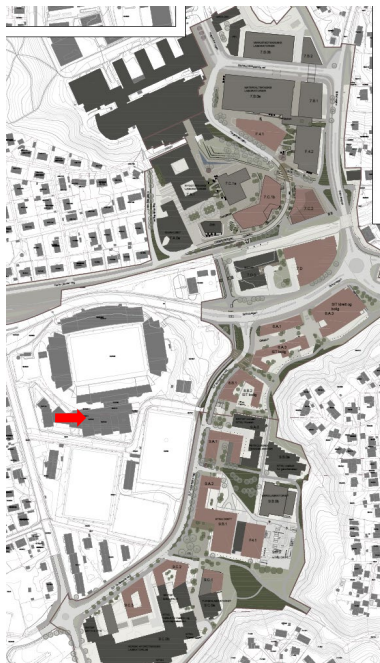
# D04&5

- Hydroteknisk / Sorgenfrivegen



# D04&5

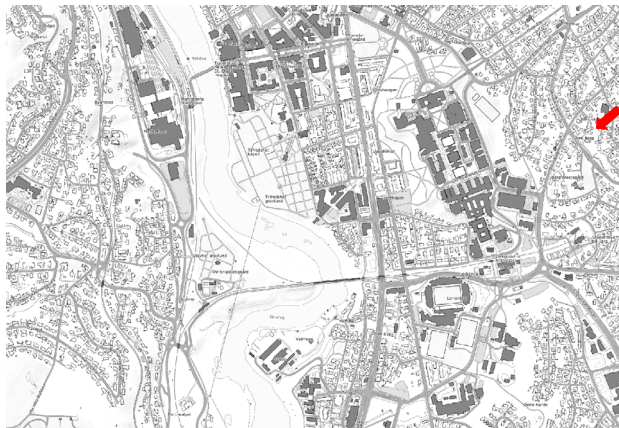
- Fra Lerkendal Scandic hotell – øverste etasje





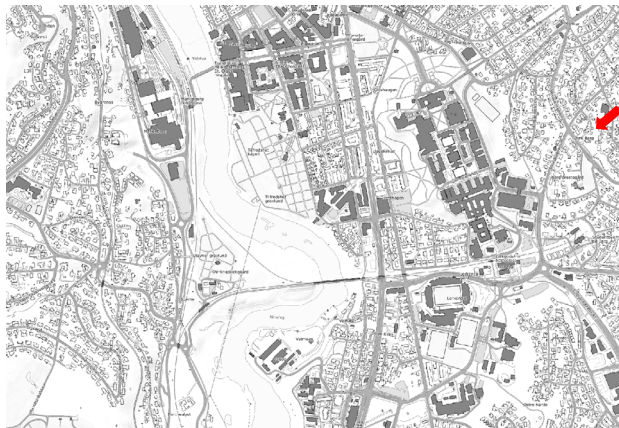
# D04&5

- Fjernvirkning – Berg skole



# D04&5

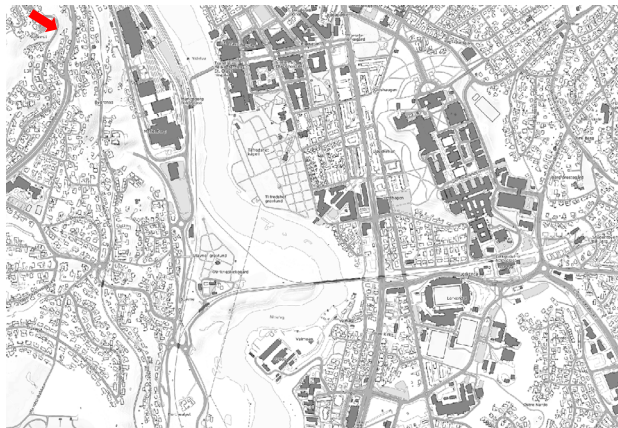
- Fjernvirkning – Berg skole
- Eksisterende situasjon





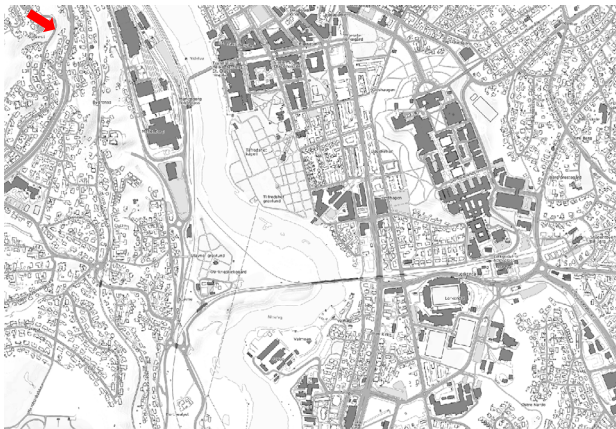
# D04&5

- Fjernvirkning – Utsikten



# D04&5

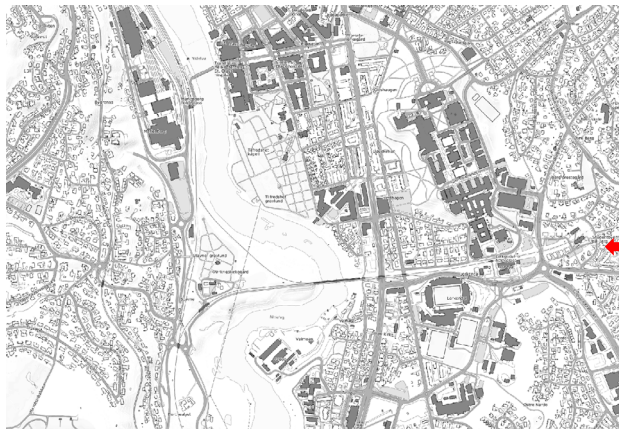
- Fjernvirkning – Utsikten
- Eksisterende situasjon





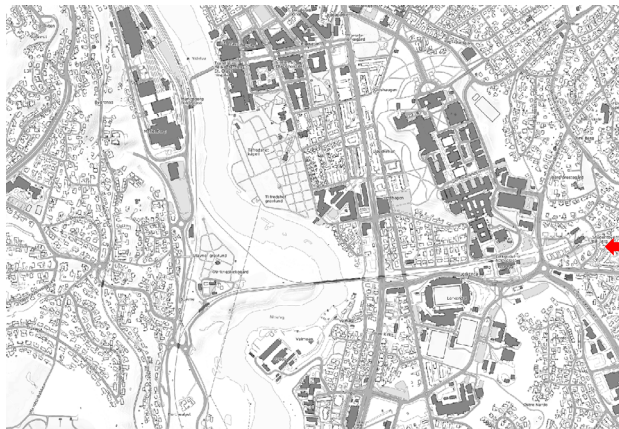
# D04&5

- Fjernvirkning – Berg studentby



# D04&5

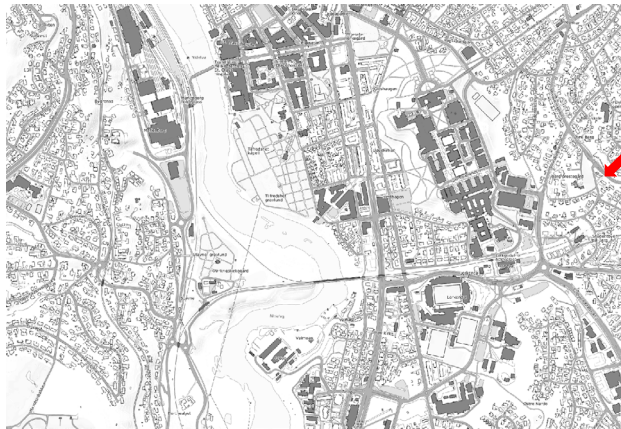
- Fjernvirkning – Berg studentby
- Eksisterende situasjon





# D04&5

- Fjernvirkning – Jonsvannsvegen





## D04&5

- Fjernvirkning – Jonsvannsvegen
- Eksisterende situasjon

